

AEL-5000

Operation Manual

S/N : 900984903 REV:A

AEL-5000 Operation Manual Menu

1.	Introduction.....	1
2.	System requirements	1
3.	AEL-5000 Software Installation	2
4.	AEL-5000 operating instructions	4

1. Introduction

The main functions of the AEL-5000 software are used to measure three-phase control, edit test steps and receive test data. The test step can be set to test, and the test can be started or paused or stopped, or when it is stopped, the system will automatically set AC/DC Load to OFF, allowing users to operate with peace of mind to avoid the risk of electric shock

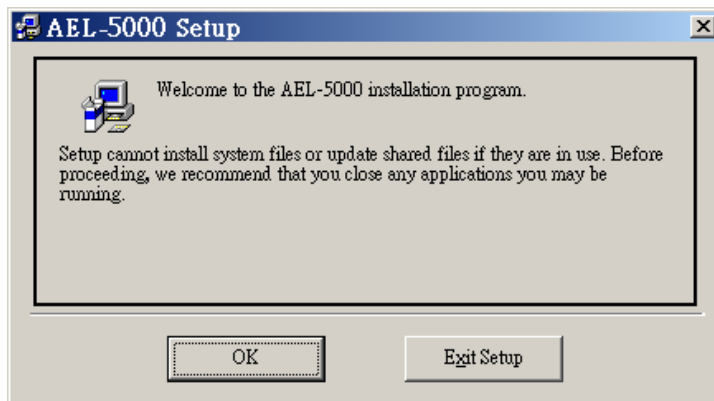
2. System requirements

1. Personal computer
 - a. Operation System : Windows 7
 - b. Display Card : resolution 1280*800
 - c. Display : 18.5" resolution 1280*800
 - d. Mouse
 - e. Keyboard
 - f. Hard Disk Space : above 500Gbytes
 - g. Memory : above 4Gbytes
2. GWInstek AC/DC Electronics Load , used for LoadLevel

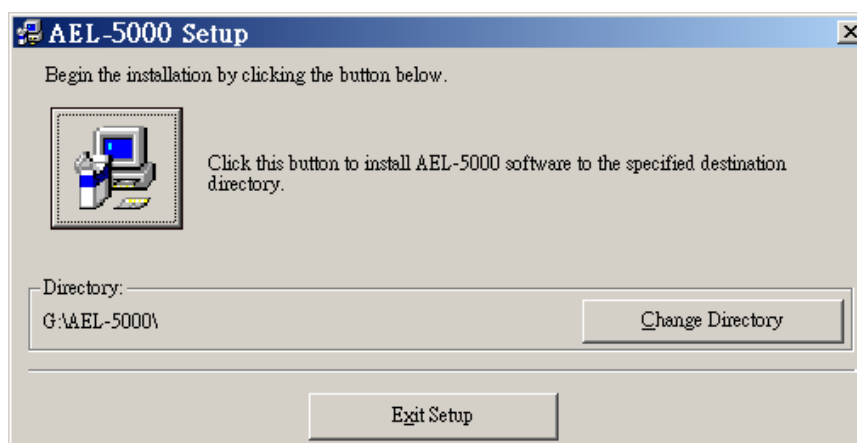
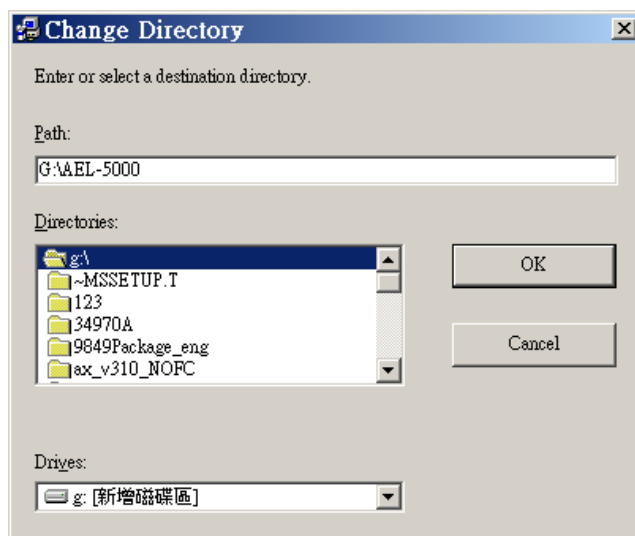
3. AEL-5000 Software Installation

AEL-5000 software has a total of 1 CD, the installation steps are as follows

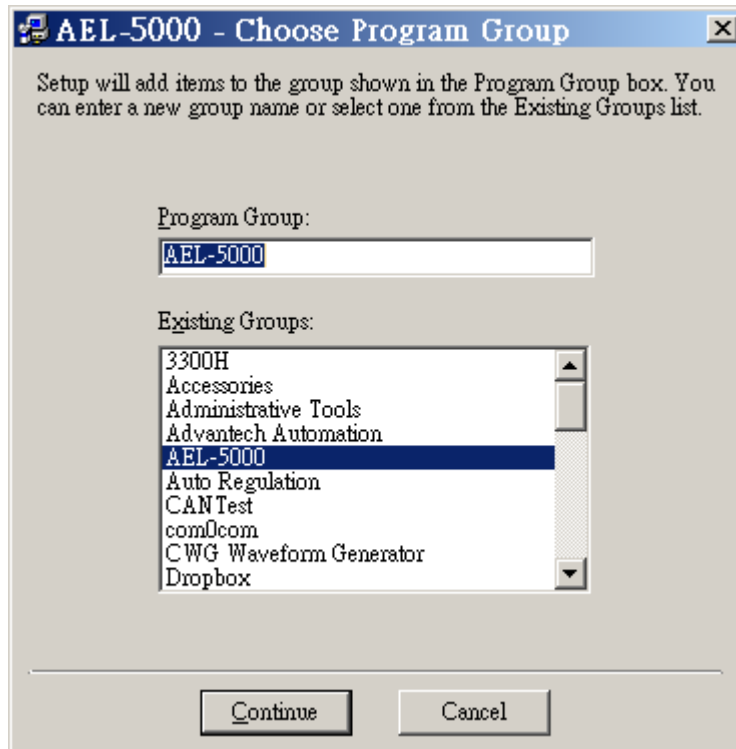
1. Boot the computer to the Windows screen.
2. Insert the CD into the root directory and execute Setup.exe, the following screen will appear.



1. It is recommended to change the directory to G:\AEL-5000 and follow the installation diagram to install.



2. After selecting the path, press "Continue" to proceed with the installation.



3. After the installation is complete, the following screen will be displayed, please press "OK".



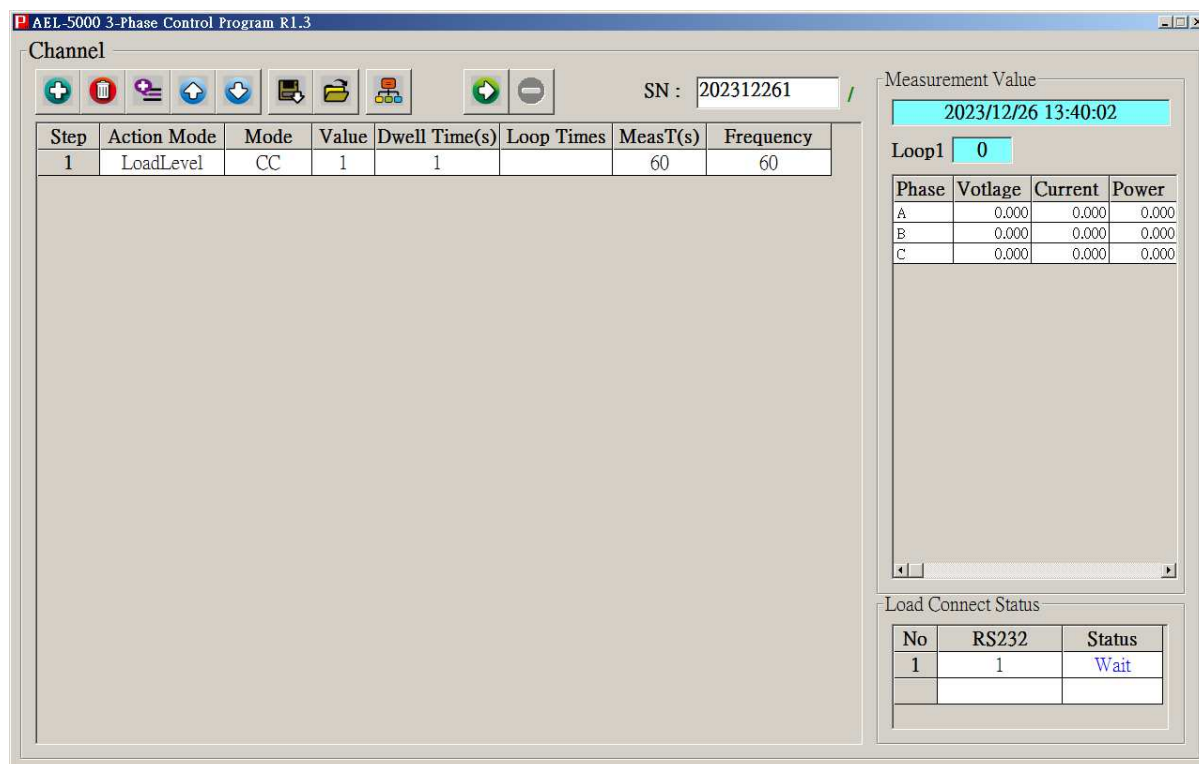
4. Press the start button on the Windows screen → select AEL-5000 in the program → press AEL-5000 to execute.









4. AEL-5000 operating instructions


1. Main page

- a. Run the assembly\AEL-5000\AEL-5000





2. Main screen function

- a.  START : Start the test, and start recording the test data in the file, the file name is the same as the SN serial number.
- b.  STOP : Stop the test, AC/DC Load is OFF. When the test is restarted, it will restart from the beginning.
- c.  Connect Setup : Device connection setting, which can be set for AC/DC Load.
- d.  Addition : A new test step is added after the last test step, up to 320 test steps.
- e.  Delete : Delete a test step.
- f.  Insert : Insert a test step after the currently selected test step, up to 320 test steps.

g.  Move Up Step : Move up the designated Step.

h.  Move Down Step : Move down the designated Step.

i.  Save Test Step : Save the test step settings to the specified file.

j.  Open Test Step : Load an existing test step file.

k. SN : Serial number input, the serial number entered will be used as the test record file name. °

l. COPY \ PASTE : You can select multiple Steps, copy them, and choose to insert Steps and paste them.

m. Measurement Value

1. Measuring time: display current working time
2. LOOP : Display the number of loops used
3. Voltage(V) : output voltage value
4. Current(A) : output current value
5. Power(W) : output power value

n. Connect Status : When the measurement is started, the system will automatically detect the connection status of the device according to the set value. If the connection is normal, it will display OK, and the connection failure will display Fail.

3.



Connection setting page :

AEL-5000 3-Phase Control Program R1.3

Channel

SN : 202312261

Step	Action Mode	Mode	Value	Dwell Time(s)	Loop Times	MeasT(s)	Frequency
1	LoadLevel	CC	1	1		60	60

Measurement Value

2023/12/26 13:38:52

Loop1 0

Phase	Voltage	Current	Power
A	0.000	0.000	0.000
B	0.000	0.000	0.000
C	0.000	0.000	0.000

Load Connection Setup

☒ LAN Load IP PORT
192.168.16.128 4001

☒ RS232 /USB COM BaudRate
01 115200

☒ GPIB Address
05

OK Cancel

a. LAP

Load IP : Enter IP address

PORT : Input communication port, default is 4001.

b. RS232/USB

COM: RS232 communication port, default is 1

BaudRate: Communication rate, default is 115200

c. GPIB

Address: GPIB address

d. OK : Save the connection settings.

e. Cancel : Cancel the Setting.

4. New test step page :

a. LoadLevel

The screenshot shows a dialog box titled 'Modify Channel - 1 Step - 1'. Inside, the 'Action Mode' is set to 'LoadLevel'. Below this is a section titled 'Load Level Setup' containing five input fields: 'Load Mode' (set to 'CC'), 'Load Value' (set to '2' with a unit 'A'), 'Dwell Time' (set to '18000' with a unit 'Seconds'), 'Measure Time' (set to '10' with a unit 'Seconds'), and 'Frequency(Hz)' (set to '60' with a unit 'Hz'). To the right of the input fields are two buttons: 'OK' and 'Cancel'.

Load Level Setup

- A. Load Mode : Select input CC/LINCC/CR/CV/CP mode
- B. Load Value : Enter the load value
- C. Dwell Time : Enter the operating time
- D. Measure Time : Input measurement time
- E. Frequency(Hz) : Input frequency
- F. OK : OK
- G. Cancel : Cancel

b. FOR

The screenshot shows a dialog box titled 'Modify Channel - 1 Step - 1'. Inside, the 'Action Mode' is set to 'FOR'. Below this is a section titled 'FOR Setup' containing one input field: 'Times' (set to '1'). To the right of the input field are two buttons: 'OK' and 'Cancel'.

FOR Setup

- A. Times : Enter the number of cycles
- B. OK : OK
- C. Cancel : Cancel

c. LOOP

Modify Channel - 1 Step - 1

Action Mode : **LOOP**

LOOP Setup

OK

Cancel

LOOP Setup

- A. OK : OK
- B. Cancel : Cancel

5. Start measurement :

Measurement Value

2020/11/12 09:32:26

Loop1 0

Phase	Votlage	Current	Power
A	0.000	0.000	0.000
B	0.000	0.000	0.000
C	0.000	0.000	0.000

Measurement Value

Time : Display the current time

Loop1 : Number of loops

Phase : A/B/C three-phase

Voltage : A/B/C three-phase voltage value

Current : A/B/C three-phase current value

Power : A/B/C three-phase power value