

Education Mode App

GDS 2000E Series

USER MANUAL

GW INSTEK PART NO.



ISO-9001 CERTIFIED MANUFACTURER

GW INSTEK

This manual contains proprietary information, which is protected by copyright. All rights are reserved. No part of this manual may be photocopied, reproduced or translated to another language without prior written consent of Good Will Corporation.

The information in this manual was correct at the time of printing. However, Good Will continues to improve its products and therefore reserves the right to change the specifications, equipment, and maintenance procedures at any time without notice.

Good Will Instrument Co., Ltd.
No. 7-1, Jhongsing Rd., Tucheng Dist., New Taipei City 236, Taiwan.

Table of Contents

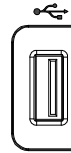
I NSTALL THE SOFTWARE..... 2

U NINSTALL THE EDUCATION MODE4

INSTALL THE SOFTWARE

Step

1. Make sure firmware version is V1.03 or higher.
2. Insert the USB memory stick with the EDU_LKModule.fun into the USB port on the front panel.



3. Press the *Utility* key.

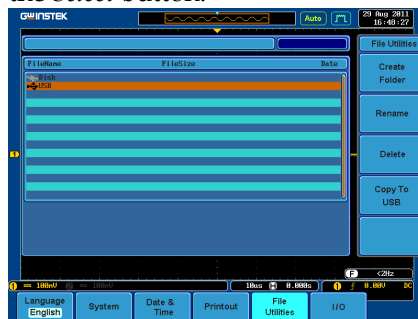
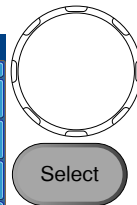


4. Select *File Utilities* from the bottom menu.

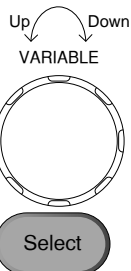


5. Use the *Variable* knob to select the USB memory stick and then press the *Select* button.

Up
Down
VARIABLE



6. Use the *Variable* knob to select EDU_LKModule.fun and then press the *Select* button to select it.



7. Press the *Select* button again to start installation.

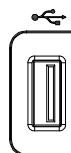


8. The installation is complete when a message showing "Please turn off the oscilloscope and turn on again" is displayed.
9. After turning on the GDS-2000E, the autoset, measurement and cursor functions will be disabled.

UNINSTALL THE EDUCATION MODE

Step

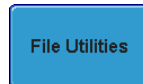
1. Insert the USB memory stick with the EDU_UNLKModule.fun into the USB port on the front panel.



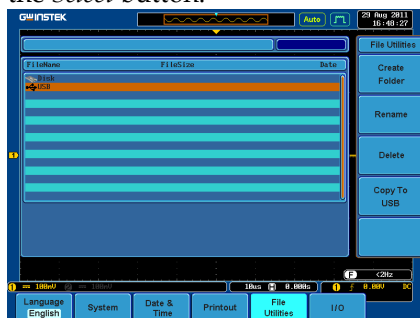
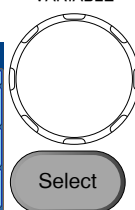
2. Press the *Utility* key.



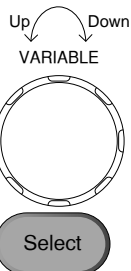
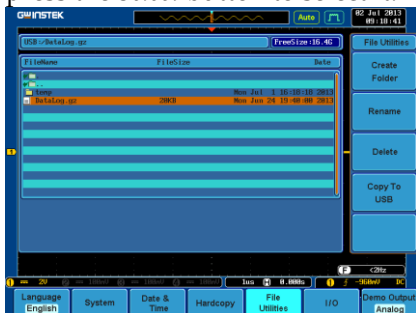
3. Select *File Utilities* from the bottom menu.



4. Use the *Variable* knob to select the USB memory stick and then press the *Select* button.



5. Use the *Variable* knob to select EDU_UNLKModule.fun and then press the *Select* button to select it.



6. Press the *Select* button again to start installation.



7. The installation is complete when a message showing "Please turn off the oscilloscope and turn on again" is displayed.
8. After turning on the GDS-2000E, the autoset, measurement and cursor functions will be enabled again.