

## PST/PSH/PSS Power Supply Labview Driver Renewal SOP

For users who have problems controlling PST / PSH / PSS power supply with the new firmware or after the firmware upgrade, please update the Labview driver to the latest version. The original Labview Driver is not compatible with new firmware version of PST / PSH / PSS. Consequently, the original Labview Program can not control power supply with the new firmware version. Use new Labview Driver to replace original Labview Driver to resolve this compatibility problem. The new firmware will be compatible with original commands of Labview program.

### A. Please first confirm the firmware version of power supply.

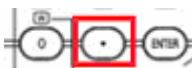
All firmware versions of power supply are as follows :

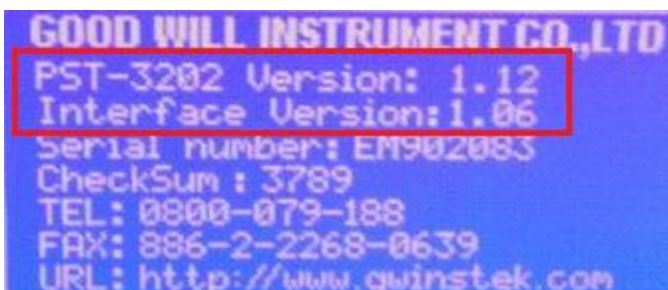
Model	F/W	Old Version	New Version	Release date of the New Version
PST	Main	1.10	1.12	2011.5.9
	Interface	1.05	1.06	
PSH	Main	1.09	1.10	2011.5.9
	Interface	1.02	1.06	
PSS	Main	1.05	1.07	2011.5.9
	Interface	1.02	1.06	

\* If the firmware version is below new version of the above list, the firmware of power supply belongs to the old version.

### B. Please refer to the firmware confirmation procedures as below :

PST firmware version confirmation procedures

1. Please press shift key
2. Please press comma key 
3. Please enter password "0010" and press Enter key.
4. The firmware version will be shown on the screen.



PSH firmware version confirmation procedures.

1. Please press LOCAL key for 5 seconds.
2. Please use F/C key and knob to enter password "0010" and press Enter key.
3. The firmware version will be shown on the screen.



4. Please press Enter key for twice and the Interface firmware version will be shown on the screen.

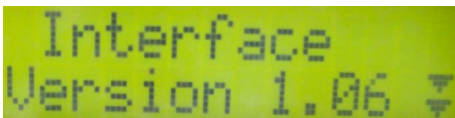


PSS firmware version confirmation procedures

1. Please press LOCAL key for 5 seconds.
2. Please use F/C key and knob to enter password "0010" and press Enter key.
3. The firmware version will be shown on the screen.



4. Please press Enter key for twice and the Interface firmware version will be shown on the screen.



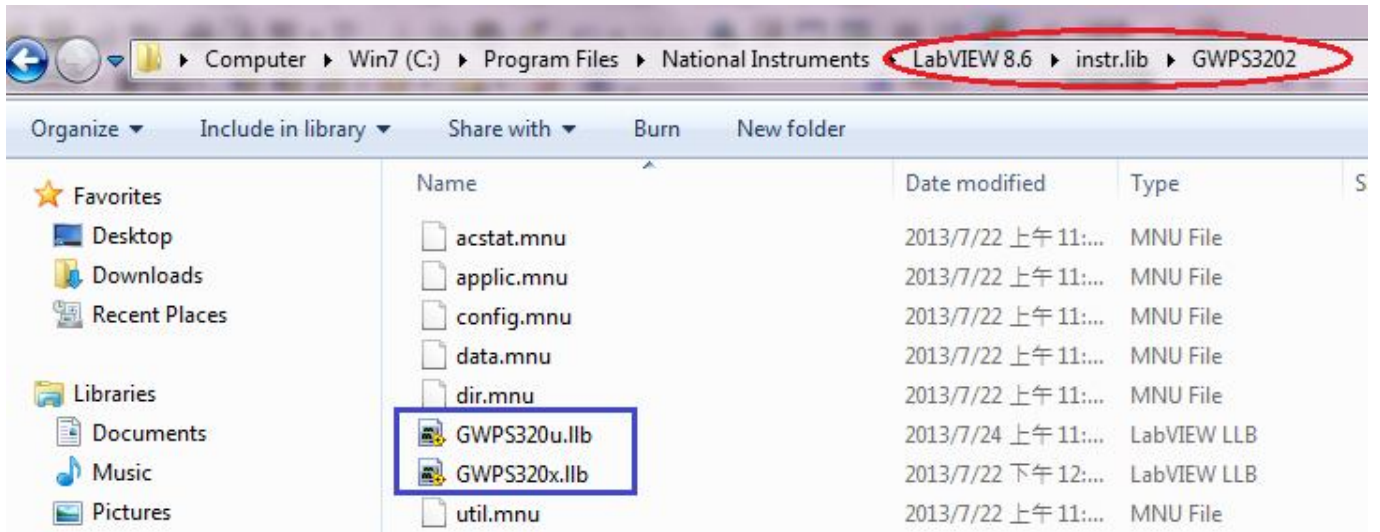
**C. Download and Renew the Labview Driver**

1. Please download the new Labview Driver from the website as below:  
<http://www.gwinstek.com.tw/en/download/downloadfilelist.aspx?id=114>

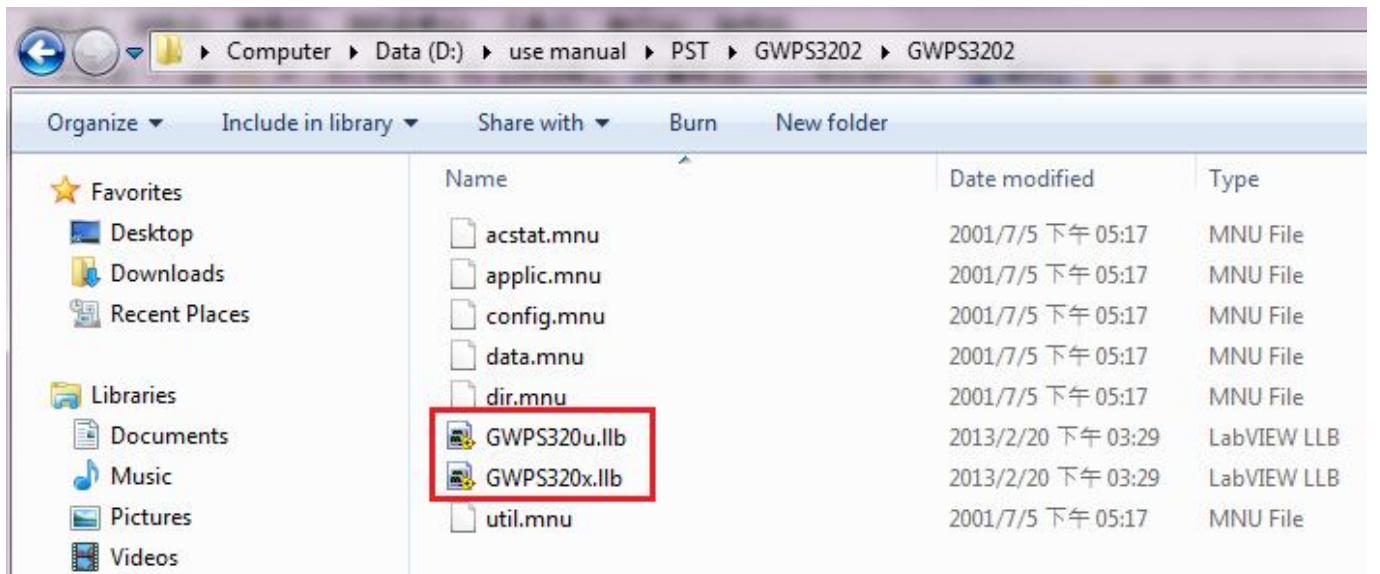
**Software**

File Name	File Size	Description	Language	Ver.	Update
Driver	380 K	LabVIEW Driver For PST Series, PSS Series, PSH Series, PS (Vista supported)	en	V0	2013/07/10
Software	12049 K	PC Software (Including Data Log)(zip) (Vista supported)	en	V1	2009/9/9

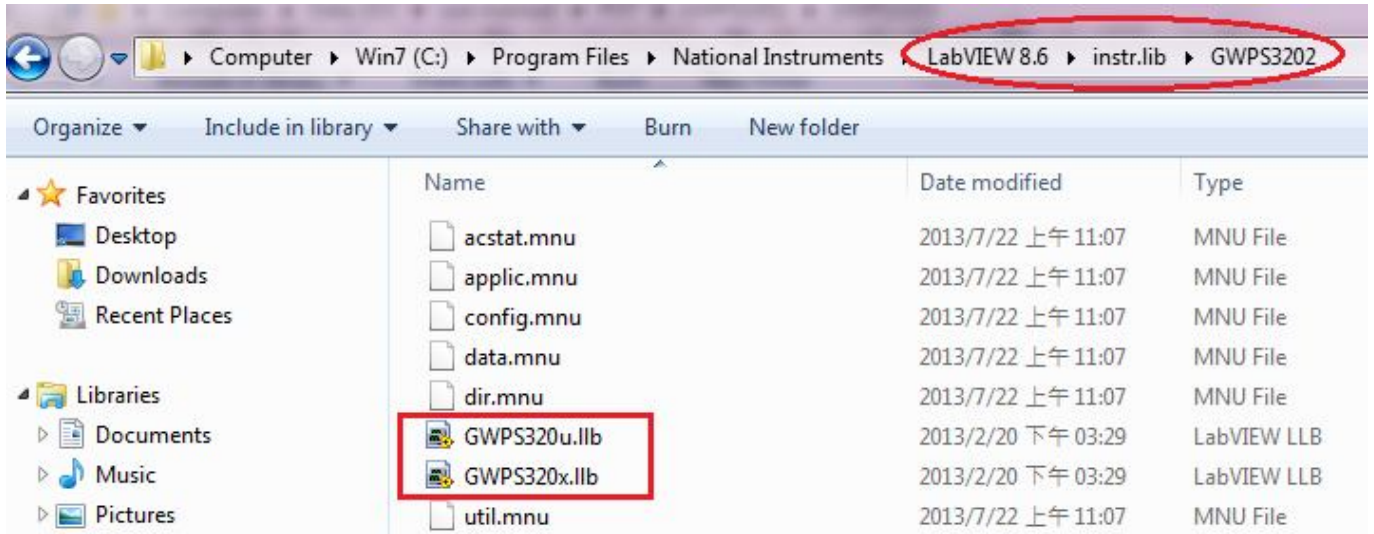
2. Please find the old version of Labview Driver from your folder.



3. Please unzip the new version of Labview Driver folder. GWPS320u.llb and GWPS320x.llb will be displayed in the folder as below.



4. Please copy the new version of Labview Driver to replace the old version Labview deiver.



5. Now the new version F/W of power supply can be controlled by the original program.

**Marketing & Service Department**  
**Good Will Instrument Co., Ltd**  
**No. 7-1, Jhongsing Road, Tucheng Dist.,**  
**New Taipei City 236, Taiwan**  
Email: [marketing@goodwill.com.tw](mailto:marketing@goodwill.com.tw)