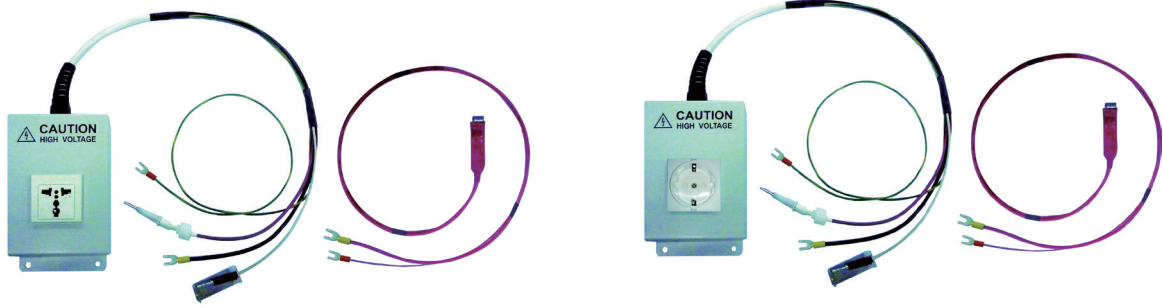


High Voltage / Ground Bond Adapter Box



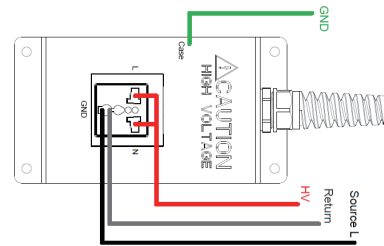
GHT-118

GHT-118 HV/GB adapter box is a dedicated test fixture for GW Instek GPT-15000/12000/9000 Series Electrical Safety Testers. The plug-in design of GHT-118 facilitates faster connection with the DUT (device under test) by using a detachable or undetectable power cable to allow GW Instek safety testers to conduct high voltage tests on the DUT such as AC withstanding, DC withstanding, insulation resistance or Ground Bond tests as well as Ground Continuity tests.

Suitable models :
GPT-15004/12004/9904/9804

[NOTE]

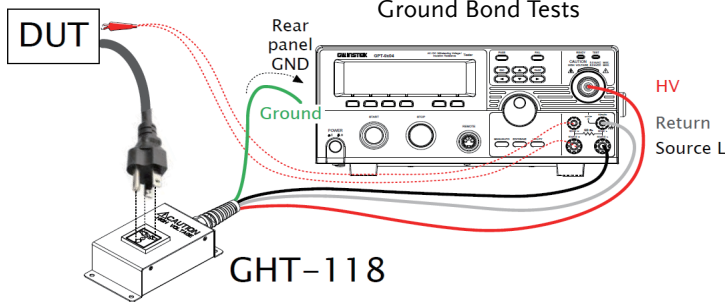
This box is designed for specific type of power plug. Please refer to the following diagram for the internal connection method of the adapter box.



* Live & Neutral is shorted together

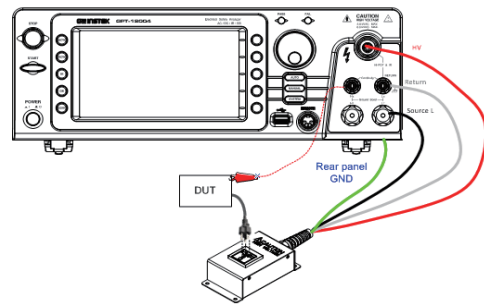
Connection Diagram

**GPT-10000/9000
Ground Bond Tests**



GPT-10000

Ground Continuity Tests



Wiring Length

Red	Approx. 1000mm ~ for High Voltage
White	Approx. 1000mm ~ for Return
Black	Approx. 1000mm ~ for Source L / Sense L
Green/yellow	Approx. 1500mm ~ for Ground
Red (with large Alligator clip)	Approx. 1000mm ~ for Source H / Sense H

Ordering Information

GHT-118 (Universal Type)	HV/GB Adapter - P/N : 1100MHT118001
GHT-118 (EU Type)	HV/GB Adapter - P/N : 1100MHT118101

Specifications subject to change without notice. HT-1180GD2DH

Global Headquarters
GOOD WILL INSTRUMENT CO., LTD.
T +886-2-2268-0389 F +886-2-2268-0639

China Subsidiary
GOOD WILL INSTRUMENT (SUZHOU) CO., LTD.
T +86-512-6661-7177 F +86-512-6661-7277

Malaysia Subsidiary
GOOD WILL INSTRUMENT (SEA) SDN. BHD.
T +604-6111122 F +604-6115225

Europe Subsidiary
GOOD WILL INSTRUMENT EURO B.V.
T +31 (0)40-2557790 F +31 (0)40-2541194

U.S.A. Subsidiary
INSTEK AMERICA CORP.
T +1-909-399-3535 F +1-909-399-0819

Japan Subsidiary
TEXIO TECHNOLOGY CORPORATION.
T +81-45-620-2305 F +81-45-534-7181

Korea Subsidiary
GOOD WILL INSTRUMENT KOREA CO., LTD.
T +82-2-3439-2205 F +82-2-3439-2207

GW INSTEK
Simply Reliable



www.gwinstek.com www.facebook.com/GWInstek