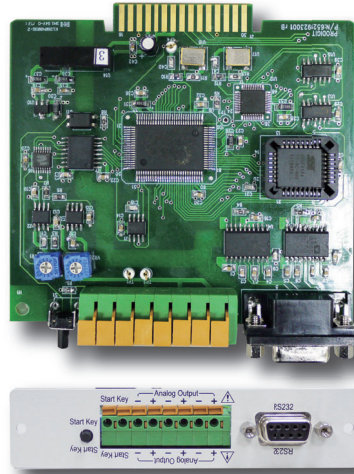


New waveform generator plug in model 9923 adds user programmable battery discharge current waveform simulation to DC Loads



The Model 9923 programmable DC load current waveform generator is designed to simulate the actual discharge current waveforms that occur when discharging batteries .

The use of batteries to power a multitude of portable devices such as mobile phones, tablets, laptops, etc. as well as mobility products like electric bicycles, scooters and cars has become widespread.

During actual operation in these applications, the battery output current changes dynamically with the operation of the product. In order to assess battery life, capacity and any time related characteristics that may occur during use, it is important to test the batteries using actual battery load current waveforms under both general and worst case conditions.

To implement these irregular load current waveforms on an electronic DC load, there are two methods that can be used :

The first method relies on the use of a digital storage oscilloscope and a current measuring device such as a current probe or shunt to capture the actual battery discharge current waveform under real world conditions. Once captured, the next step is to take this waveform data and transfer it to an arbitrary waveform generator.

1. Use the arbitrary waveform generator to edit the load current waveforms manually as needed.
2. The output of the arbitrary waveform generator is then sent to the analog input of the DC load.

The second method is to use the new 9923 load current generator which can be installed on a wide range of Prodigit's DC electronic loads. The generator output is connected to the DC load's analog input using the provided BNC cable and eliminates the need for a separate arbitrary generator. Use either manual waveform data editing or import and oscilloscope waveform to generate simulated load current waveform on the DC load.

The 9923 Load current waveform plug-in generator can be installed on a wide selection of DC loads, including modular 3300F/G, 3302F/G, 3305F/G chassis and high power electronic loads such as the 3350F, 3360F, 34000A/C or 36000A/C series.

PC application software is provided with the 9923 generator to allow waveform editing, oscilloscope waveform download and other programming functions.

The DC Load Current Waveform Generator supports up to 2048 steps per timing sequence output voltage and the ability to cycle this waveform up to 9999 times. With the included 9923 application software, the user can generate the desired load current waveform. The output of the Generator is connected to the ANALOG INPUT terminal of the electronic load cause it to sink the specified current waveform. Refer to the he current sink example shown in Figure 1. The 9923 technical specification is as shown below. A generator output voltage of 10 V is equal to the maximum current value of the electronic load used. An output of 5V is equal to 1/2 the maximum current specification of the load, and so on.

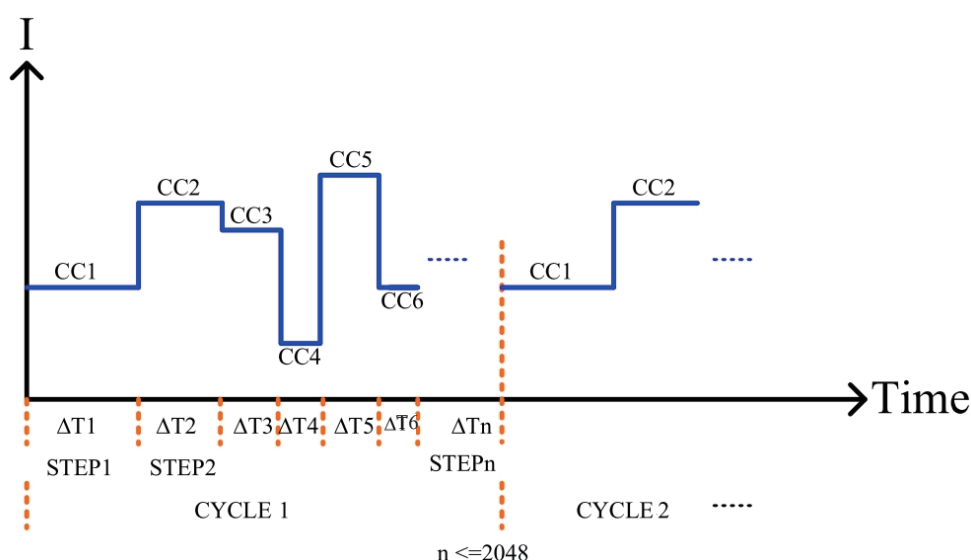


Figure 1 Load current waveform

9923 Current Waveform Generator Application Software

The included 9923 Load Current Waveform Generator Application Software may be used to edit waveforms that provide the user with a variety of real load conditions on his electronic load. Up to 2048 steps in each timing sequence can be edited.

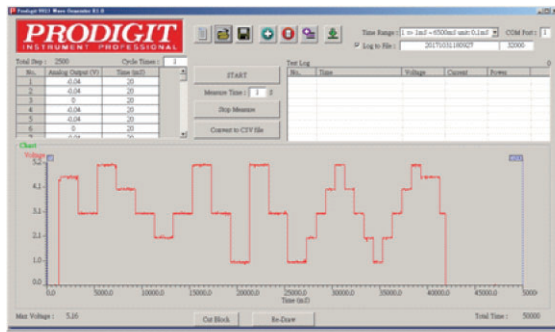
The timing sequence programmed can be cycled up to 9999 times. The minimum available time for each timing step is 50 μs and the maximum length of a sequence is about 130,000 seconds or about 36 hours. Using the electronic load's measurement function, the voltage, current and power status when sinking current can be monitored.

In addition to manually editing the required current waveform, the user can also use an oscilloscope to capture and store the actual current waveform using a comma separated value file (*.csv). The 9923 application software can read this current waveform file and then download it to the 9923 Load Current Waveform Generator for Electronic load simulation use.

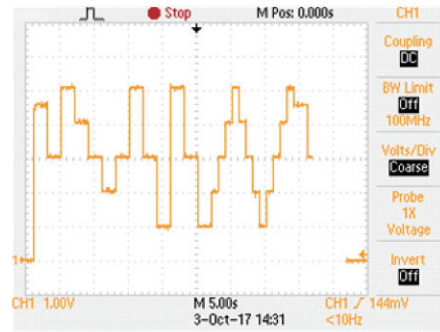
Typical applications

1. Simulation of Battery discharge in real-world applications (Loads may be notebook computers, electric vehicles, electric scooter etc.) to simulate a variety of dynamic load sink current waveforms and to provide a number of dynamic current load level simulations.
2. Testing of power supply load modulation.
3. Simulation of fuel cell life cycle testing.

a. Use the self-editing load current waveform to simulate the method of reproduction :

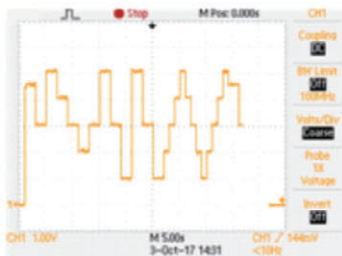


Edit by 9923 application software

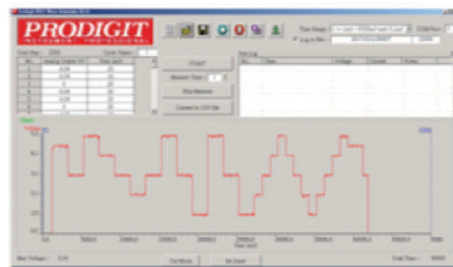


Regeneration the load current waveform

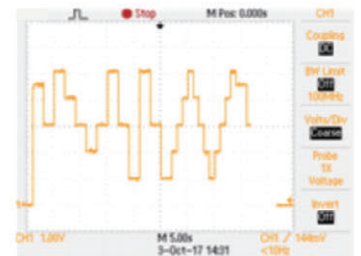
b. Use the oscilloscope's load current waveform (*.csv), after it has been processed by the 9923 application software, then download to the 9923 to simulate current :



Actual load current waveform



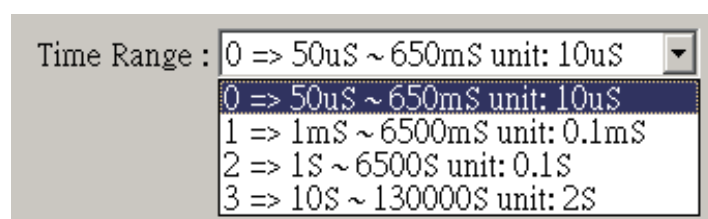
edit by 9923 application software



Regeneration the load current waveform

c. Time Range : Select to use the time specification

User can set Time Range 0 to 3 or use the oscilloscope to store the actual current waveform (*.CSV), by means of the 9923 application software to read the actual current waveform file (*.CSV) and then download to 9923 Current Waveform Generator to proceed with Electronic load simulation.

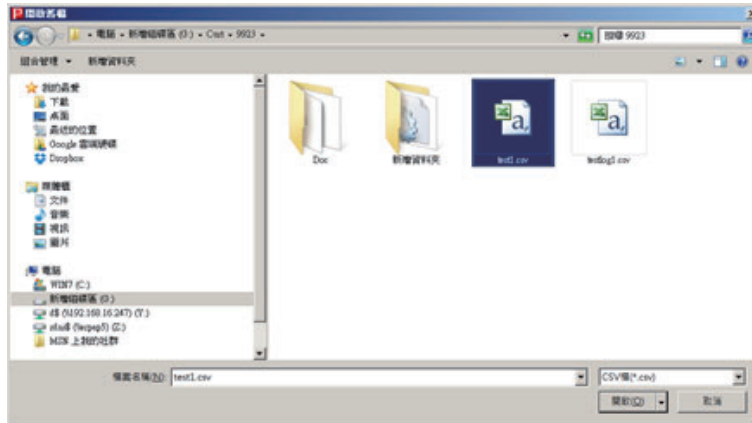



d. COM Port : Set RS-232 connection COM Port

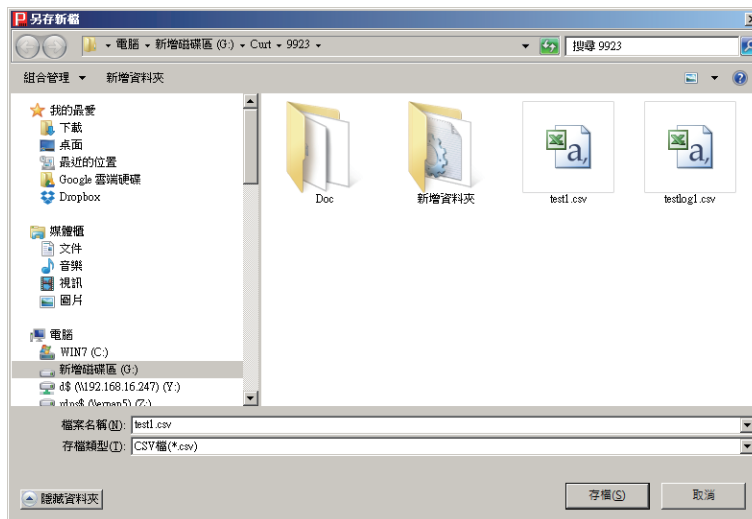
e.  New File : Open a new file


f.  Open old File :

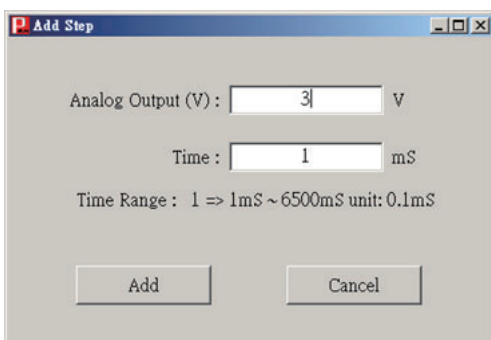
Load the existing test step file, or load the oscilloscope CSV format file using the 9923 application software to read the actual current waveform file (*.csv) and then download it to 9923 Current Waveform Generator to proceed Electronic load simulation.




g.  Save to File : Save the test step setting values to the specified file.

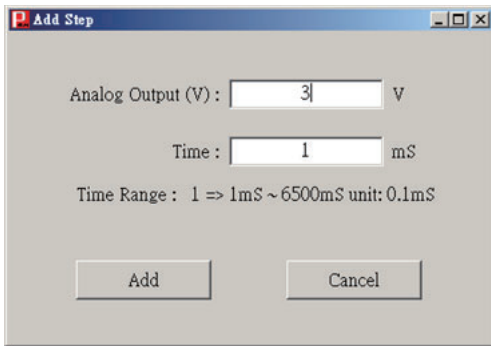


h.  Addition : Add a test step after the last test step, maximum up to 2048 test steps.
The program will display and error message if there are more than 2048.



1. Analog Output(V) : Set the Analog Output Voltage.
2. Time : Set the output voltage time, the unit changes according to Time Range.
3. Add : Make sure to add a new one.
4. Cancel : Cancel setting.

- h.  Addition : Add a test step after the last test step, maximum up to 2048 test steps.
The program will display an error message if there are more than 2048.




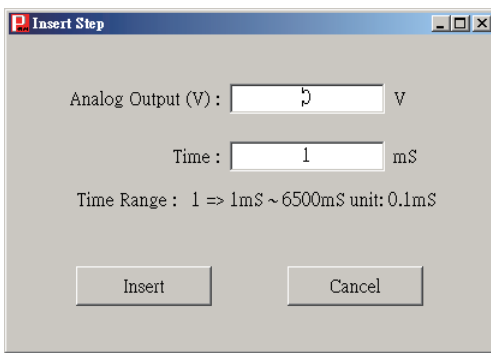
The 'Add Step' dialog box contains the following fields and controls:

- Analog Output (V) : V
- Time : mS
- Time Range : 1 => 1mS ~ 6500mS unit: 0.1mS
- Buttons: Add, Cancel

1. Analog Output(V) : Set the Analog Output Voltage.
2. Time : Set the output voltage time, the unit changes according to Time Range.
3. Add : Make sure to add a new one.
4. Cancel : Cancel setting.

- i.  Delete : Delete a test step.

- j.  Insert : Insert a test step after the currently selected test step, maximum up to 2048 test steps.
If there are more than 2048, the program will display an error message.



The 'Insert Step' dialog box contains the following fields and controls:

- Analog Output (V) : V
- Time : mS
- Time Range : 1 => 1mS ~ 6500mS unit: 0.1mS
- Buttons: Insert, Cancel

1. Analog Output (V) : Set the analog output voltage.
2. Time : Set the load time, the unit changes according to Time Range.
3. Insert : Make sure to insert a new one.
4. Cancel : Cancel setting.

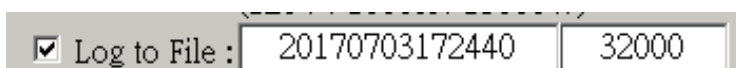
- k.  Download to Load : Download test step to 9923

- l. Test Step List : Show all test step setting data.

- Double-click to edit the column, press [Enter] to set. If [Enter] is not pressed, the program will not make changes.
- When the modification is complete, the timing diagram will change and will automatically move to the next step to provide the changes.
- When pressing [Enter] in the last step, the program will automatically go to the next channel to allow more changes.

- m. Cycle Times : Set the number of cycles, maximum up to 9999 times.

- n. Log to File : Select whether to save file only and not appear in the list



The 'Log to File' dialog box contains the following fields and controls:

- ☒ Log to File :

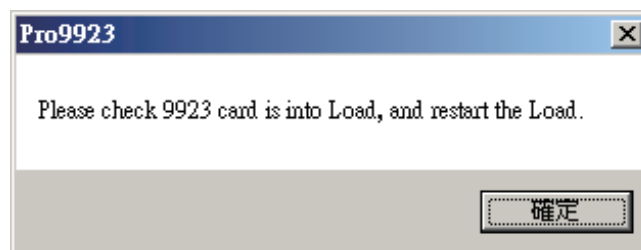
Check the Log to File box and the program will automatically generate the serial number YYYYMMDDhhmmss. The user can also change this field manually. This field will be used to create a log to file name, followed by a 0001 count number. The test log file will be stored in the TestLog folder.

o. Test Step List : Show all test step setting data.

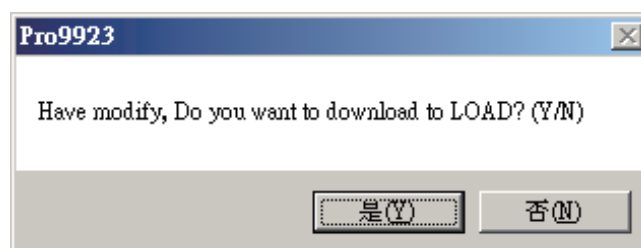
- Double-click to edit the column, press [Enter] to set. If [Enter] is not pressed, the program will not make changes.
- When the modification is complete, the timing diagram will change and will automatically move to the next step.
- When pressing [Enter] in the last step, the program will automatically go to the next channel to allow more changes.

p. Start : Start the test.

1. First, the PC must be connected to the 9923 to perform an interface connection detection. If the system does not use the 9923 card or has already started and has not restarted LOAD, the system will prompt alert [Please check 9923 card is installed in the Load, then restart the Load.], Press OK to exit the start function, as shown below.



2. The next step will compare the test steps. The 9923 software will not download to the 9923 EEROM if the test steps are the same. The 9923 software will prompt the user whether to download to 9923 if the test steps are not the same. In that case, the system will show a prompt [Have modify. Do you want to download LOAD? (Y/N)], As shown below.



3. After starting the test, if you set the Measure Time to a value greater than 0, the program measure the voltage, current, power and other information, and recorded in the Test Log according to the time interval set.

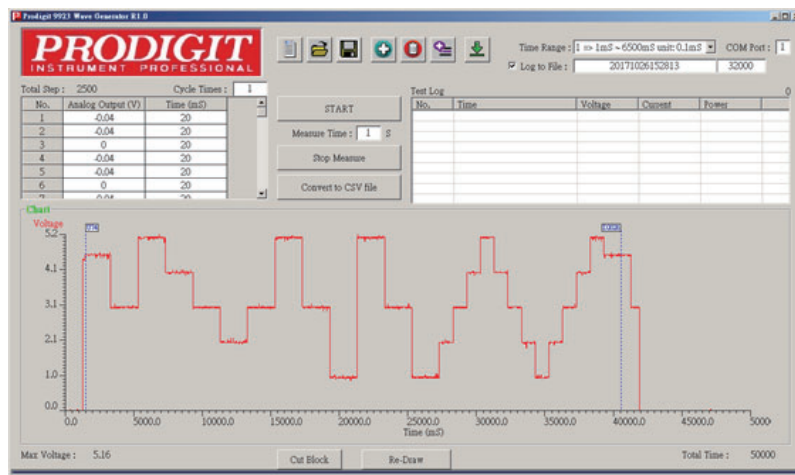
q. Stop : Stop measuring

r. Chart : Display timing diagram.

s. ReDraw : Redraw timing diagram.

t. Cut Block : Delete the data outside the block.

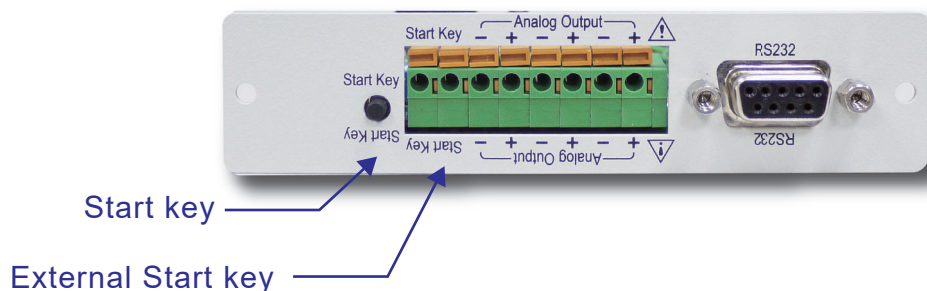
Users can adjust the position of Ux and Dx to reduce the amount of data.



Specification				
Voltage LevelRange				
Range	0 V to 10 V (=full scale current spec.)			
Resolution	16 bit			
Accuracy	±0.05 %(reading + range)			
Time Range				
Range	0	1	2	3
	50 μs to 6500 μs	1 ms to 6500 ms	1 sec to 6500 sec	10 sec to 130000 sec
Resolution	10 μs	1 ms	1sec	2sec
Accuracy	±15 μs	±0.15 ms	±0.15sec	±0.5sec
STEP	1 to 2048			
CYCLE	1 to 9999			

Stand-alone application (no need for a computer connection)

The 9923 supports stand-alone operation as well. In this case, the user need only download the waveform data to the 9923 EEPROM. If there is no need for the application software to record the voltage, current and other information, the computer connection can be removed. The user only has to Press the Start button on the 9923 rear panel itself. The analog output will begin to load according to the edited voltage level and feed the analog input of the timing output voltage signal to the electronic load. Users can also use the Start key terminal connection (External Start key) to connect an appropriate length remote external button if more convenient .



9923 panel diagram

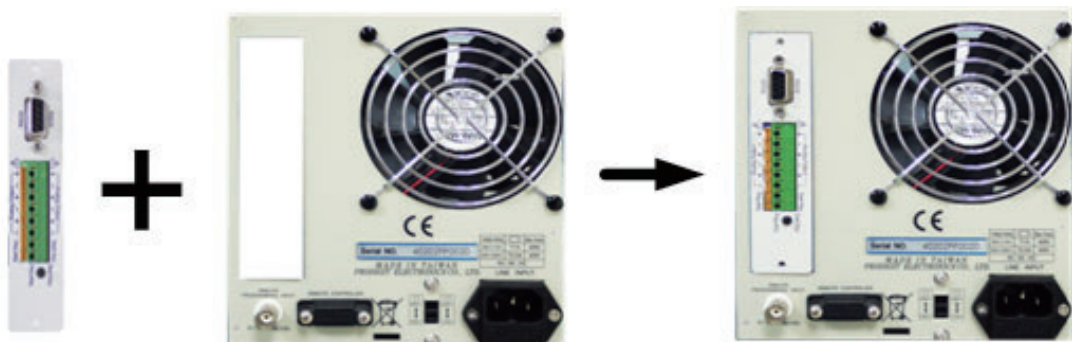
Parallel applications

The 9923 can be applied to multiple parallel loads as needed. Because the 9923 current waveform generator uses the analog input function to control the load current, when the load power or load current is insufficient, you can obtain higher power and current using multiple loads. The 9923 supports parallel operation of up to three electronic loads. The 9923 rear panel provides 3 sets of Analog outputs (internal paralleled). In cases where more than three loads in parallel are needed, the user can use a T-type BNC connector to extend the output signal to more loads. The 9923 Current Waveform Generator Application Software scales corresponding waveform voltage level as the sum of the current of the parallel loads. For example, when 3 sets of 3311F/G 60 V / 60 A / 300 W are required to test 120 A, each 3311F/G must allocate 40 A current Analog input. This requires 6 A / V, $40/6 = 6.66$ V. Thus, the 9923 application software voltage must be edited to 6.66 V and then through the following diagram connected in parallel with three 3311F/G. Each 3311F/G will see an input voltage level equivalent to a 40 A load current, resulting in a total of 120 A.



9923 is connected to three electronic loads

9923 Installation method



9923

3302F/G mainframe rear panel

9923 is installed in 3302F/G mainframe