

Firmware Upgrade Guide

For GDM-9052/904X



Hardware / Software requirement

Hardware

Machine

- GDM-9052/9042/9041

Cable

- USB cable (A/B type)

PC

- Windows operation system

Software

Driver

- ST DFU driver

Programmer

- DfuSeDemo.exe

Firmware

GDM-9052/9042/9041

- GW GDM90XX_V1.03_20250722.dfu

Software Download

For required software, please visit GW website
on “Download” section

<https://www.gwinstek.com/en-global/products/detail/GDM-9052>

or

<https://www.gwinstek.com/en-global/products/detail/GDM-904x>

Firmware Upgrade

GDM-9052/GDM-904x
Series Firmware update
program & procedure

2025-08-25

Firmware

GDM-9052 Newest firmware
file

2025-08-25

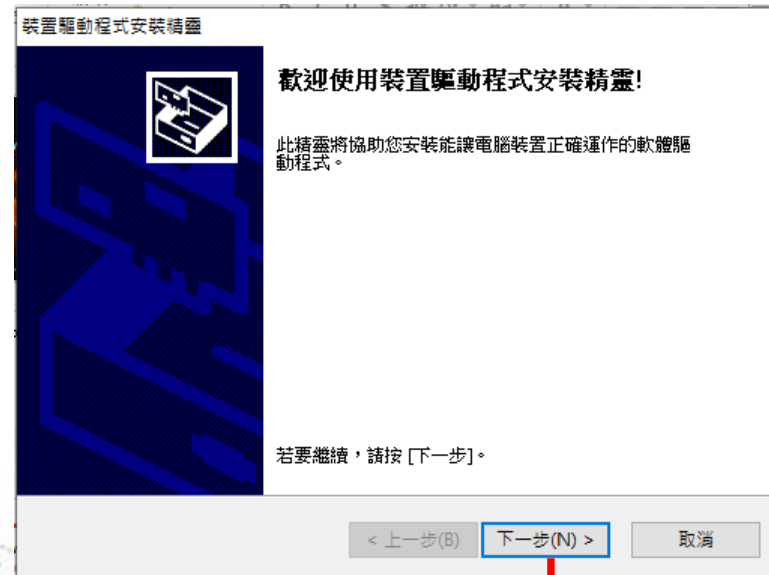
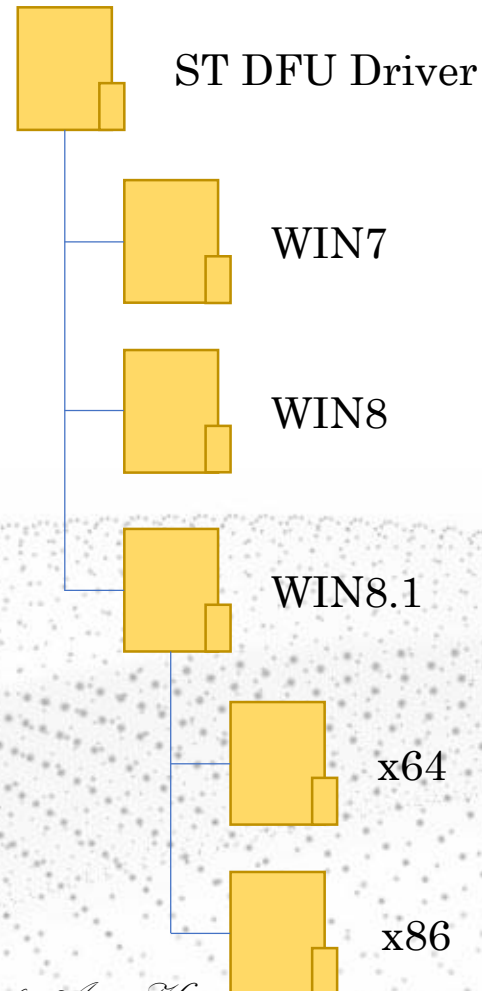
Firmware

GDM-904x Series Newest
firmware file

2025-08-25

Software Installation

Install ST DFU driver to PC (according to the system type)



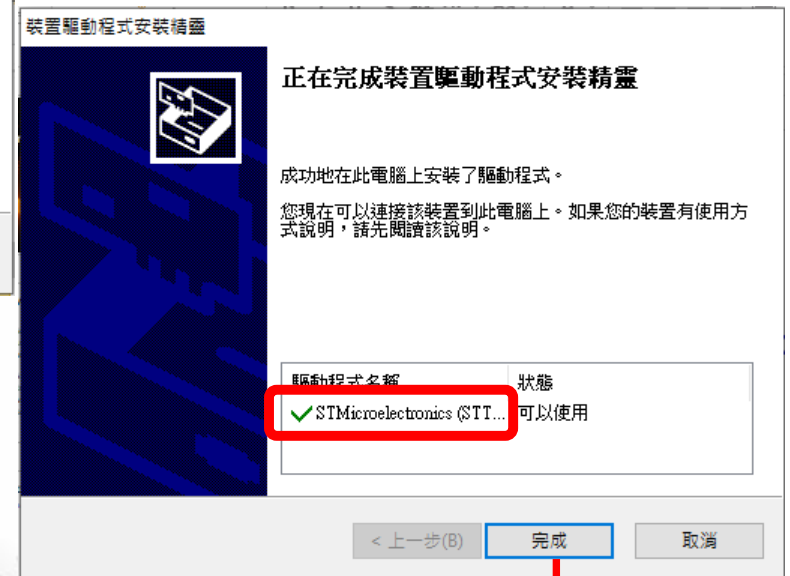
NEXT



dpinst_amd64.exe



dpinst_x86.exe



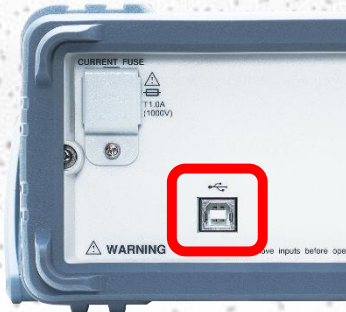
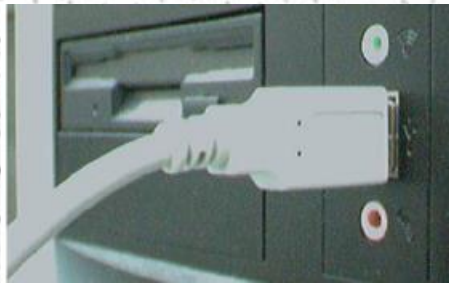
DONE

Firmware Update

STEP1: Preparation

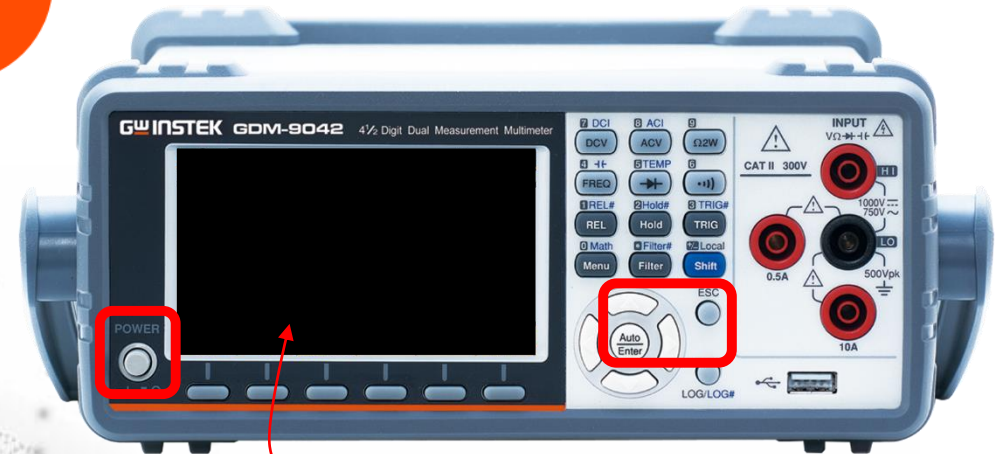
*Use USB cable (A / B type),
connect machine & PC*

1



2

*Press & Hold the “AUTO”
and “Esc” key together and
then “POWER” up*

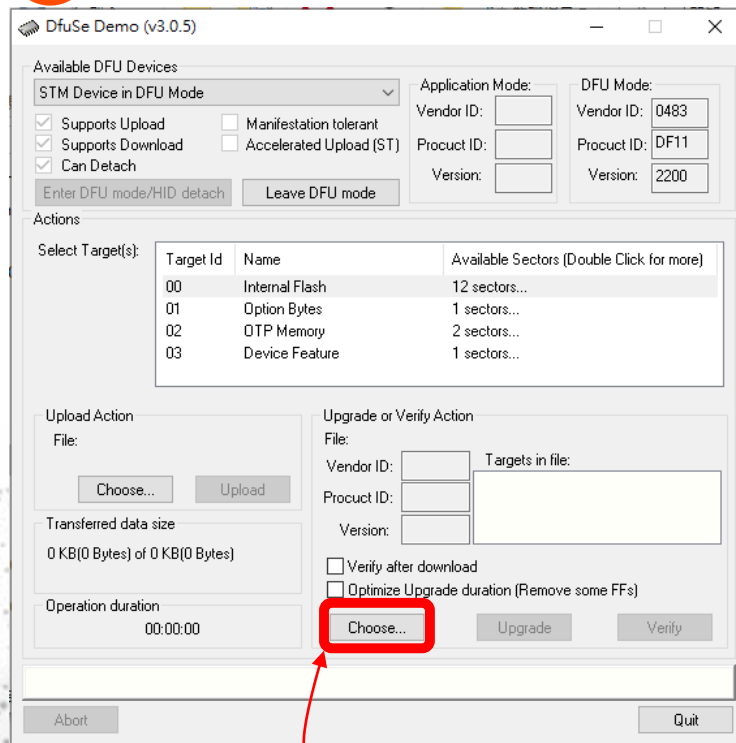


The display is “dark” after “POWER” up


Firmware Update

STEP2: Execute Programmer DfuSeDemo.exe

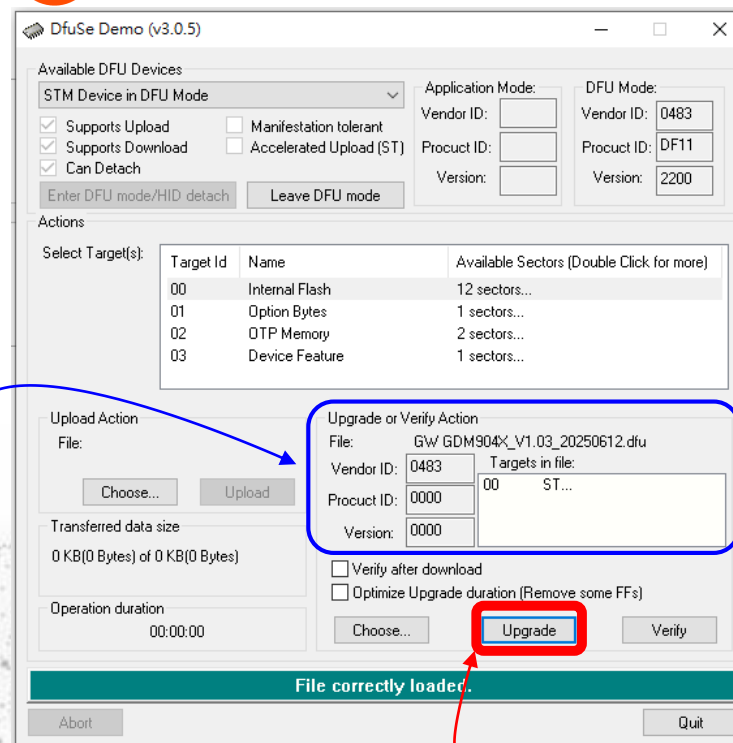
1



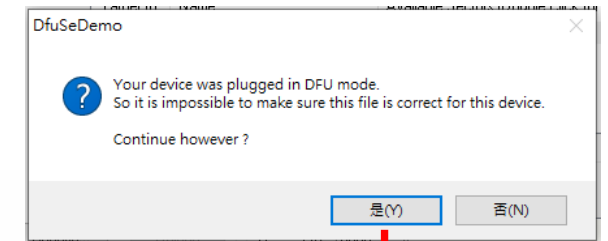
Selecting the update file

 GW GDM904X_V1.03_20250612.dfu

2



Execute the Upgrade

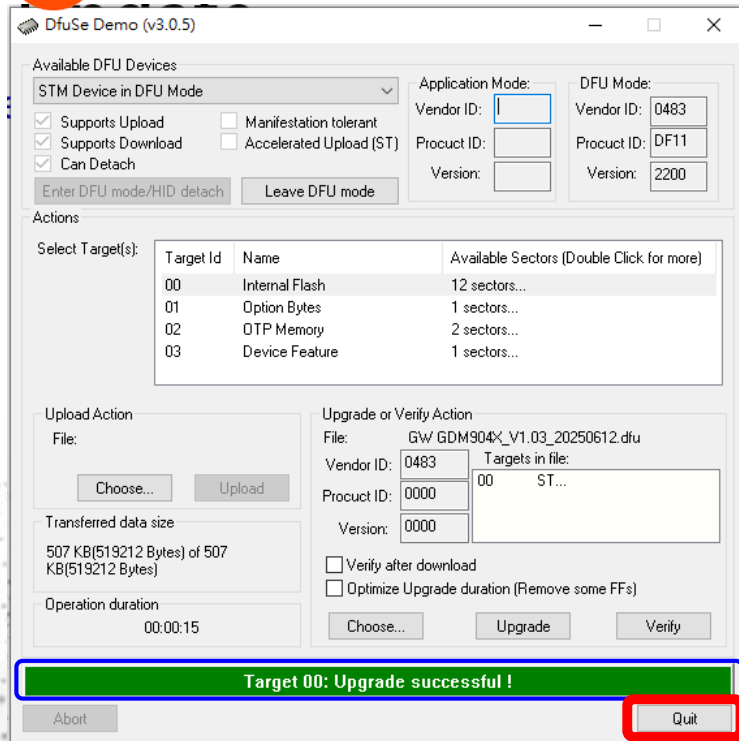


YES

Firmware Update

STEP3: Complete and Check

3



*Close the programmer
after Upgrade successful*

4

- *Re-“POWER” up the GDM*
- *Press “Menu” key*
- *Check the firmware version*

