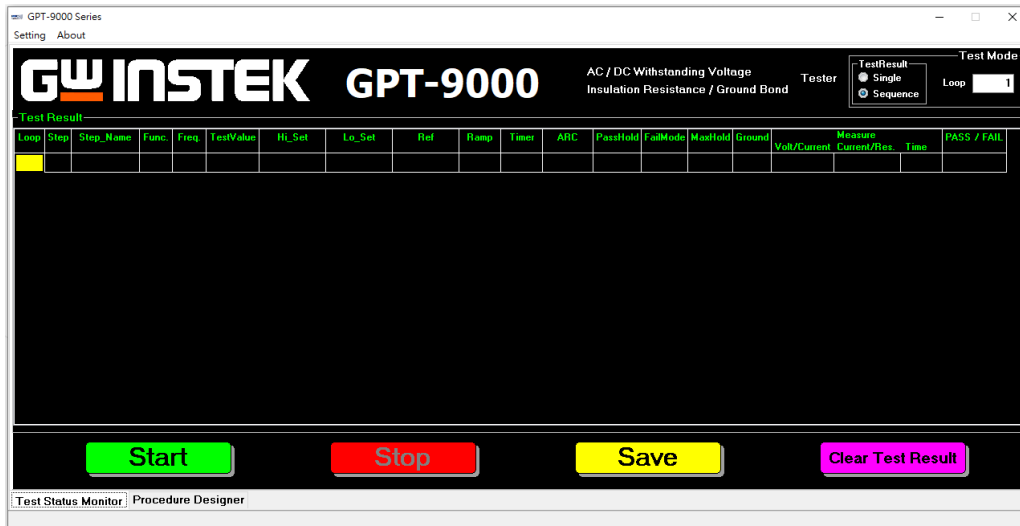


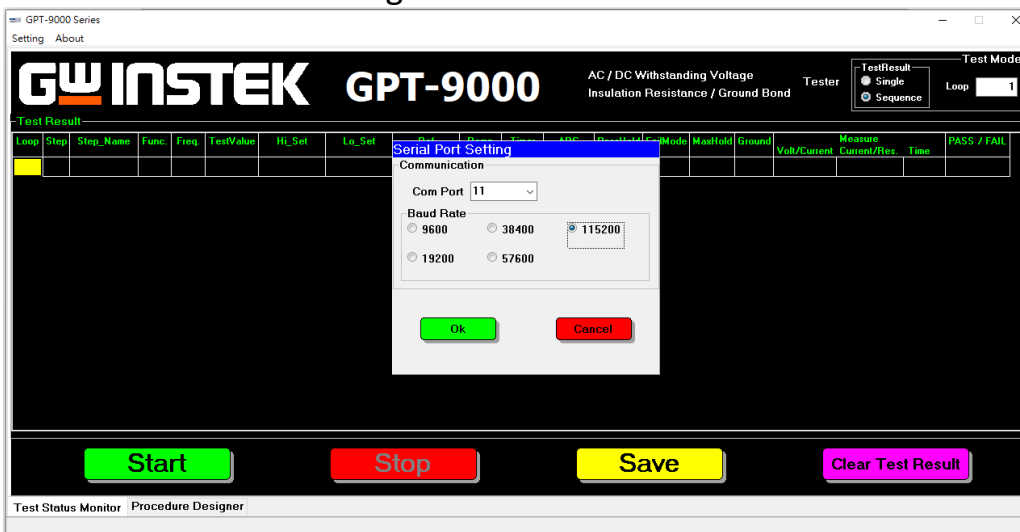
# Quick Guide for GPT PC software

## ❖ Turn on the PC software

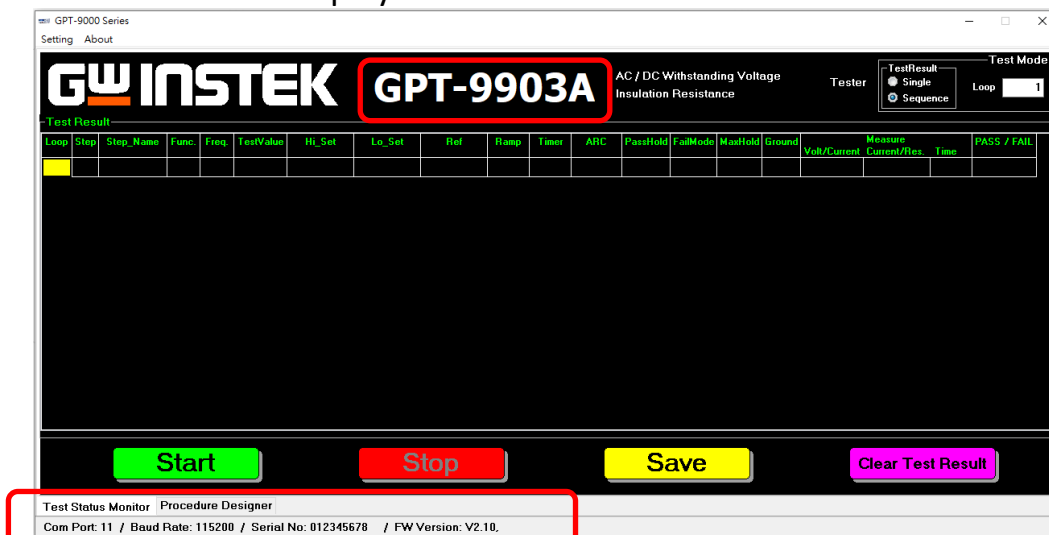


## ❖ Make connection

1. Click on "Setting"
2. Set serial port parameters ~ COM port and Baud Rate
3. Press "OK" to confirm setting



4. Once the communication is successful, the model number and port information will be displayed on software.

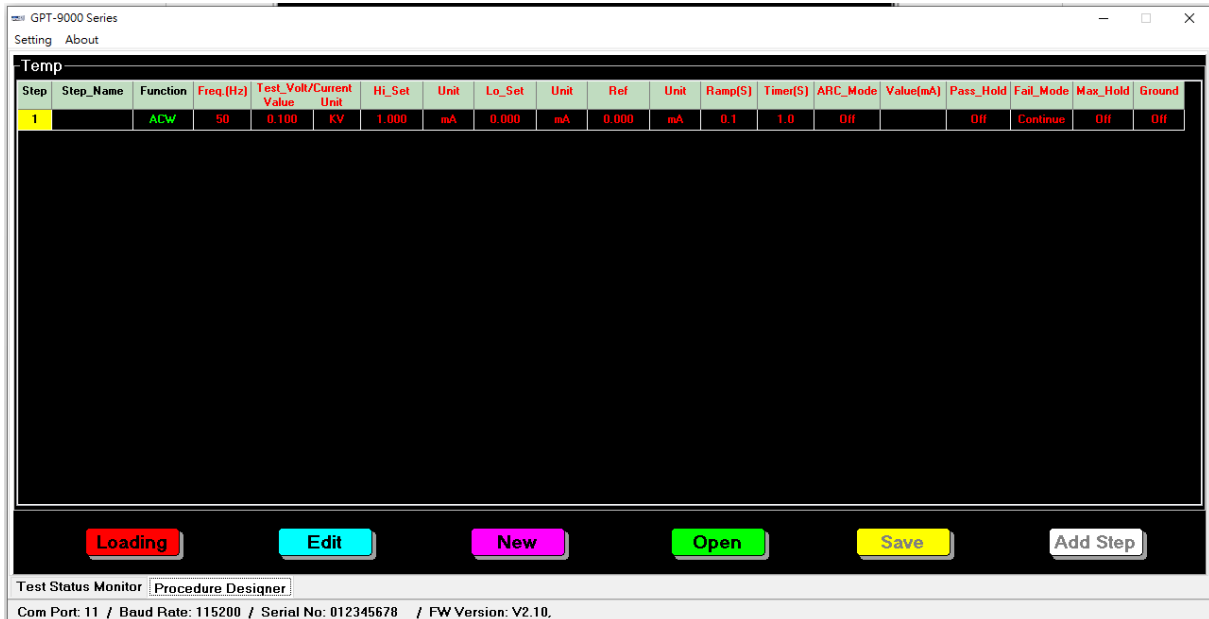


# Quick Guide for GPT PC software

## ❖ Set the test parameters

Go to “Procedure Designer”

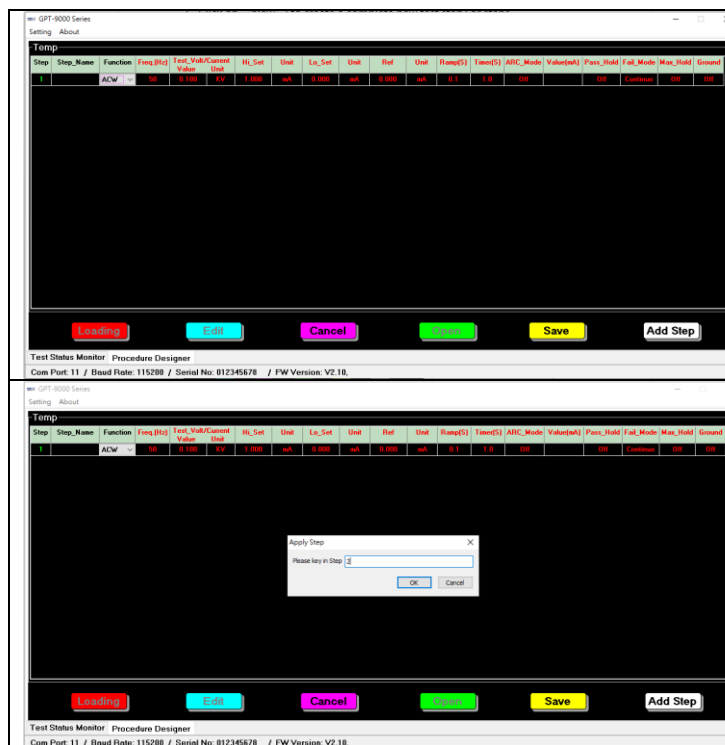
(Note: there is default step when turning on this software every time.)



1. Click on “EDIT”: to edit the test step / parameters for current screen.
2. Click on “New”: to create a complete new test step/ or steps.
3. Click on “Open”: to recall the previous saved file for test step
4. Click on “Save”: to save the currently edited test step for loading or recall.
5. Click on “Add Step”: to add more test steps during editing
6. Click on “Loading”: to upload the current test step to GPT

## [Warning]

The “Loading Parameter” will overwrite the corresponded location of reserved parameter on GPT. Therefore, recommend to reserve MANU=\*\*\*-001 ~ MANU=\*\*\*-010 for programming control of GPT software.



## EDIT :

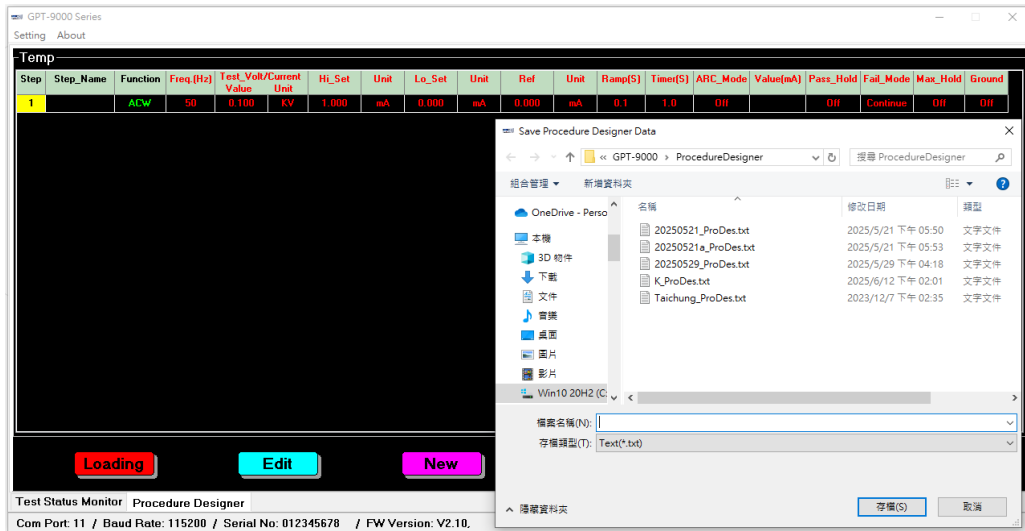
Set the parameter by selecting or key in number

## Add Step :

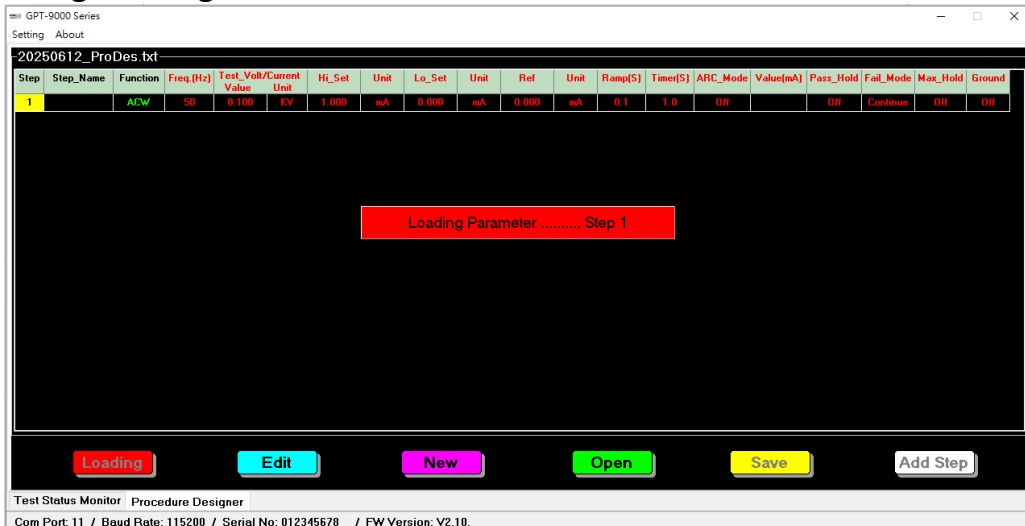
Creating more steps for performing multi –steps testing

# Quick Guide for GPT PC software

- Once the editing is done, click on “Save” to save entire test steps in to a file for further recall



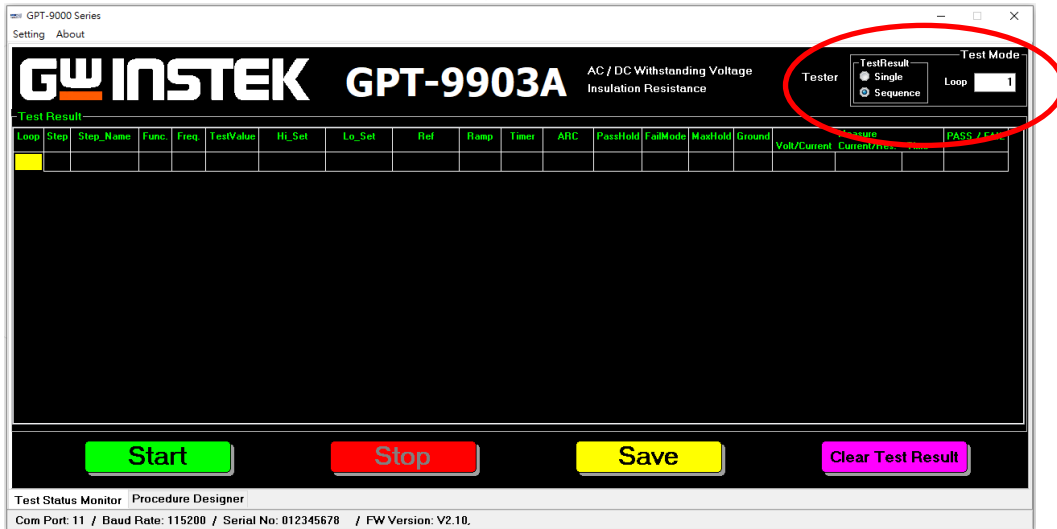
- After the file is saved, the current parameters can be loaded to GPT by pressing Loading.



# Quick Guide for GPT PC software

## Ready to test

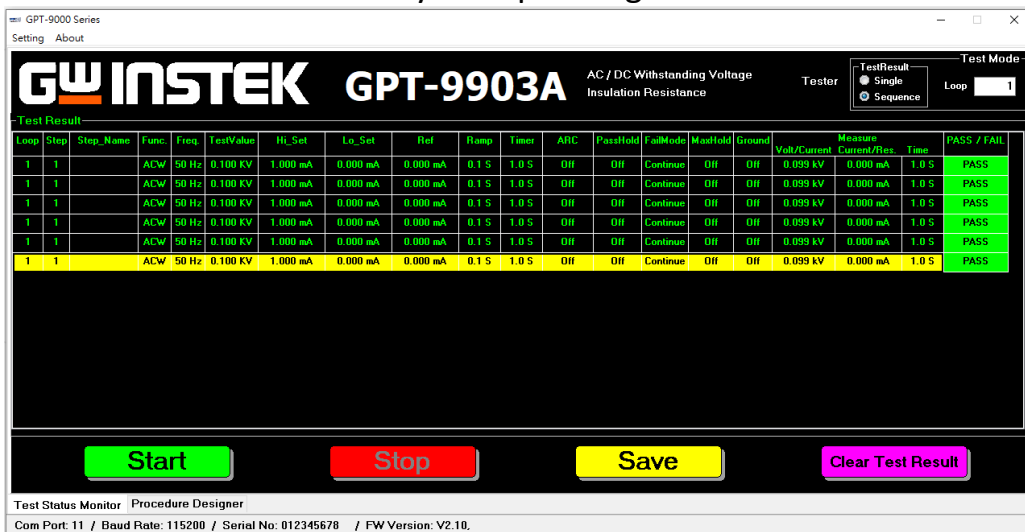
After the parameters are loaded, go back to “Test Status Monitor”  
Set “Test Mode” with TestResult ~ Sequence and Loop ~ one time.



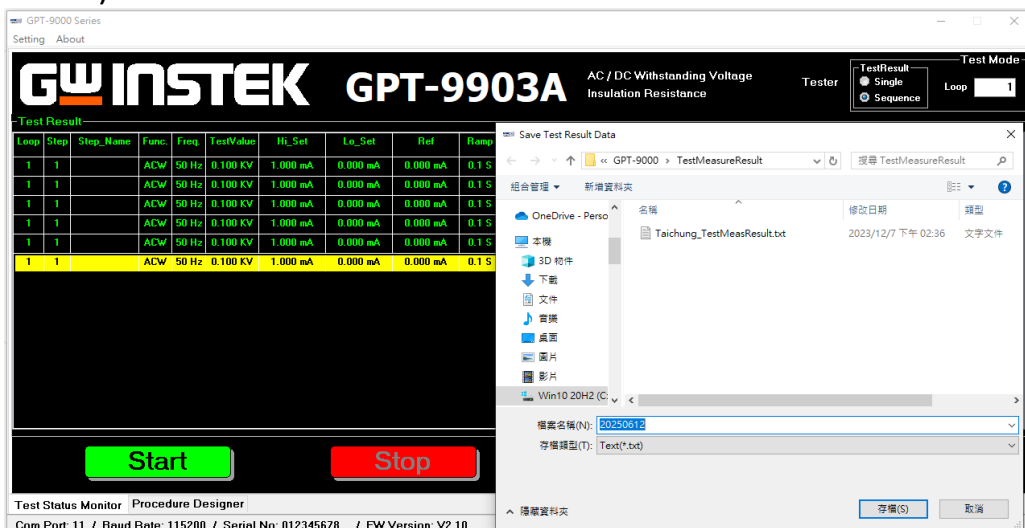
## ✂ Run test

Press **Start** to run a test.

Test result will remain when every time pressing Start



After the batch of product is tested, press **Save** to store all the results into file (format : txt)



# Quick Guide for GPT PC software

## [Note1]

Remember to clear all the test result on “Test Status Monitor” screen before running a new test with different test steps or parameters. Otherwise, all the results on screen will be stored when the Save is pressing.

## [Note2] Firmware version requirement

- V3.01 above for GPT-9800 series
- V2.01 above for GPT-9900 series